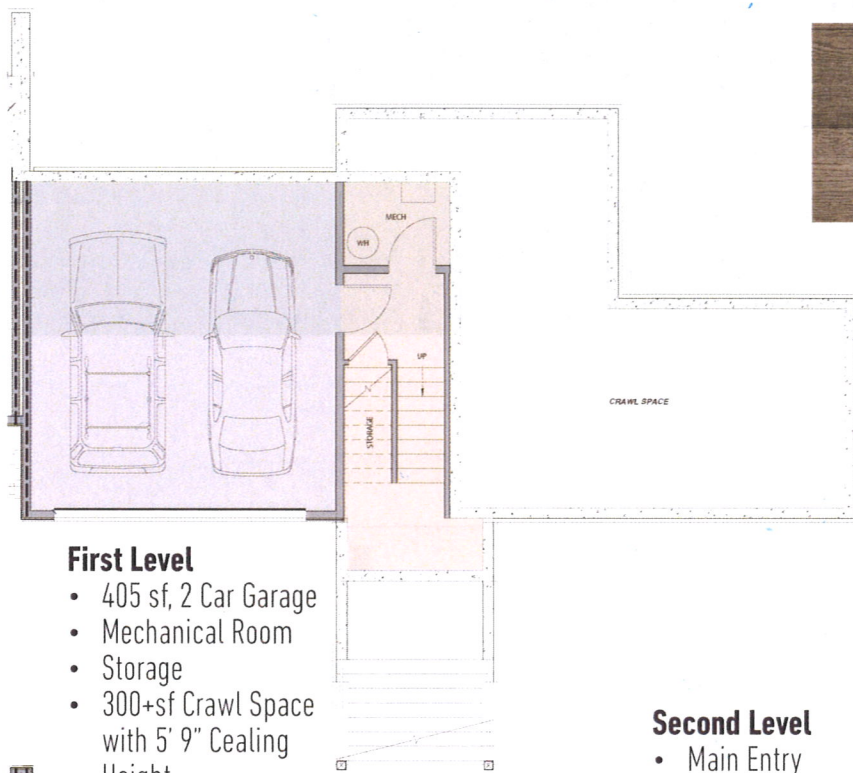


MOUNTAIN MODERN | INCREDIBLE VIEWS | 3-STORY TOWNHOUSE | 3 BED 2.5 BTH | 2 CAR GARAGE | 3.6 MILES TO TOWN



First Level

- 405 sf, 2 Car Garage
- Mechanical Room
- Storage
- 300+sf Crawl Space with 5' 9" Ceiling Height



Fixtures and Finishes Subject to Change

terrapien.llc
f i

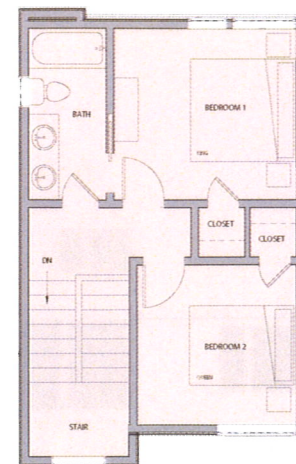


Second Level

- Main Entry
- Open Concept
- 9ft. Ceilings
- Linear Gas Fireplace
- Master Bedroom w/ Vaulted Ceiling
- Laundry
- Powder Room

Third Level

- 2 Bedrooms w/Vaulted Ceilings
- Shared Bath w/Tub



1,673 Square Feet